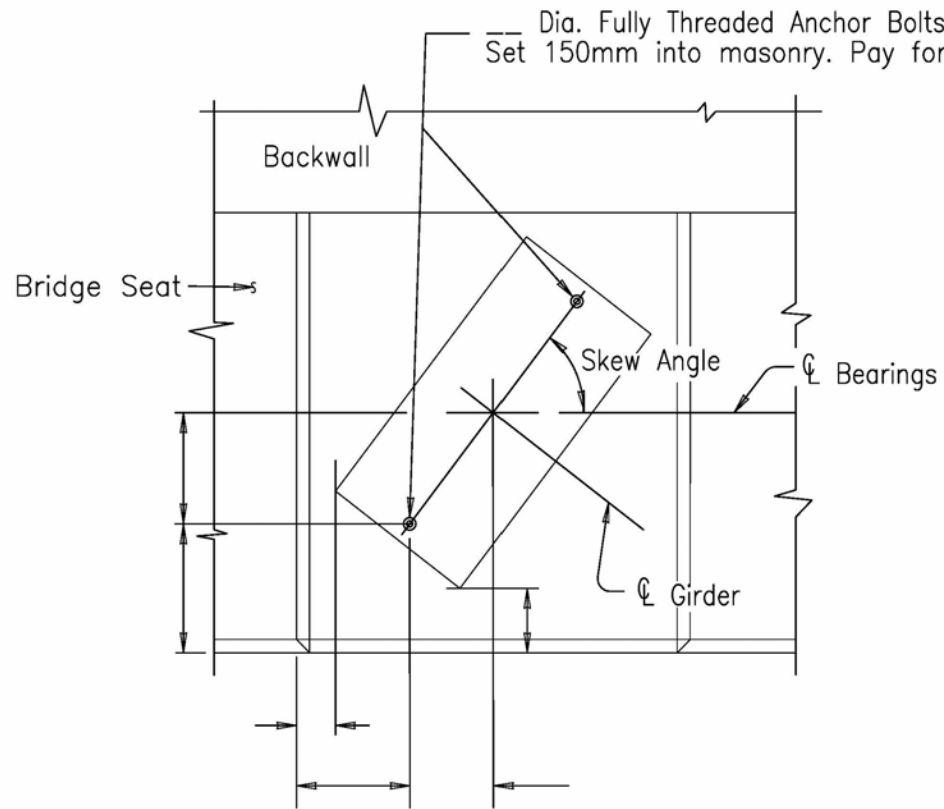
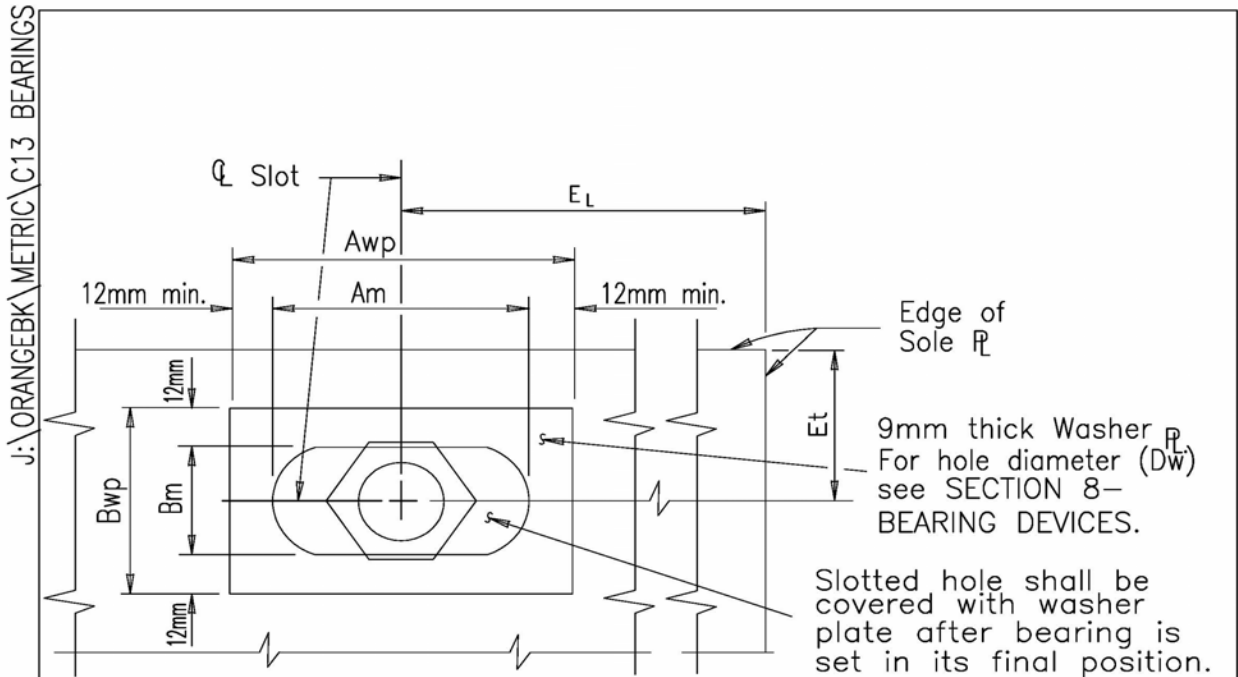


C13-1



### ANCHOR BOLT LAYOUT

Scale: 1 : 12



TYPICAL SLOTTED HOLE DETAIL  
Not To Scale

Anchor Bolt shall be threaded as shown in "ANCHOR BOLT DETAIL FOR ALL BEARINGS" The nut shall be left above the top of the sole plate. The Anchor Bolt shall extend 12mm above the top of the top nut. Anchor Bolts, Plates, Washer Plates and Nuts shall conform to the requirements of Subsection 723-60 and shall be paid for under the bearing item.

\* One way longitudinal movement is the maximum movement (Expansion or Contraction) of the Superstructure when bearings are set @ 20° C. This includes 25mm of tolerance.

